



User Manual

HDBaseT Transmitter 4K (60Hz 4:2:0) with IR and RS232

Model PT-HDBT-702-TX

Designed in Germany

Preface

Read this user manual carefully before using this product. Pictures shown in this manual are for reference only. Different model layouts and specifications are subject to the physical product.

This manual is for operation instructions only, not for any maintenance usage.

In the constant effort to improve our product, we reserve the right to make changes in functions or parameters without prior notice or obligation.

Trademarks

Product model and logo are trademarks. Any other trademarks mentioned in this manual are acknowledged as the properties of the trademark owner. No part of this publication may be copied or reproduced without the prior written consent.

FCC Statement

This equipment generates, uses and can radiate radio frequency energy and, if not installed and used in accordance with the instructions, may cause harmful interference to radio communications. It has been tested and found to comply with the limits for a Class B digital device, pursuant to part 15 of the FCC Rules. These limits are designed to provide reasonable protection against harmful interference in a commercial installation.

Operation of this equipment in a residential area is likely to cause interference, in which case the user at their own expense will be required to take whatever measures may be necessary to correct the interference.

Any changes or modifications not expressly approved by the manufacture would void the user's authority to operate the equipment.



REACH | 1907/2006/EU

ROHS | 2011/65/EU

PureLink hereby declares that this product **PureTools PT-HDBT-702-TX** complies with Directives 1907/2006/EU und 2011/65/EU.

EMC / LVD (Electro Magnetic Compatibility / Low Voltage Directive)

PureLink GmbH hereby declares that this product **PureTools PT-HDBT-702-TX** complies with Directives 2014/30/EU and 2014/35/EU. The full text of the EU Declaration of Conformity is available at the following Internet address:

http://www.purelink.de/ce/4251364706763_CE.pdf



SAFETY PRECAUTIONS

To insure the best from the product, please read all instructions carefully before using the device. Save this manual for further reference.

- Unpack the equipment carefully and save the original box and packing material for possible future shipment
 - Follow basic safety precautions to reduce the risk of fire, electrical shock and injury to persons.
 - Do not dismantle the housing or modify the module. It may result in electrical shock or burn.
 - Using supplies or parts not meeting the products' specifications may cause damage, deterioration or malfunction.
 - Refer all servicing to qualified service personnel.
 - To prevent fire or shock hazard, do not expose the unit to rain, moisture or install this product near water.
 - Do not put any heavy items on the extension cable in case of extrusion.
 - Do not remove the housing of the device as opening or removing housing may expose you to dangerous voltage or other hazards.
 - Install the device in a place with fine ventilation to avoid damage caused by overheat.
 - Keep the module away from liquids.
 - Spillage into the housing may result in fire, electrical shock, or equipment damage. If an object or liquid falls or spills on to the housing, unplug the module immediately.
 - Do not twist or pull by force ends of the optical cable. It can cause malfunction.
 - Do not use liquid or aerosol cleaners to clean this unit. Always unplug the power to the device before cleaning.
 - Unplug the power cord when left unused for a long period of time.
 - Information on disposal for scrapped devices: do not burn or mix with general household waste, please treat them as normal electrical wastes.
-

Introduction to PT-HDBT-702-TX

The PT-HDBT-702-TX is a mini-size HDBaseT Transmitter to extend HDMI signal to HDBaseT Receiver via CAT5e/CAT6a cable. HDBaseT technology is used to transmit high-resolution 1080p/ 4k signal from PT-HDBT-702-TX to the receiver via a CAT5e/CAT6a cable at a distance of up to 70/40m. Moreover, it support CEC, bi-directional RS232&IR control, and bi-directional PoH function.

Feature

- Support Full HD: Delivers high resolution image (1080p@60Hz@48 b/pixels/3D/4Kx2K).
- Maximum transmission distance is 70m for 1080p and 40m for 4Kx2K over single CAT5e/CAT6a cable
- High Bandwidth: 10.2Gps.
- HDTV Compatible, use HDMI 1.4 and HDCP2.2 compliant.
- Support CEC/IR/RS232 passthrough.
- Support bi-directional PoH function.
- Bi-directional RS232/IR control.
- Use HDBaseT technology.
- LED indicators show work status.

Package Content

- 1 x PT-HDBT-702-TX
- 4 x Plastic Cushions
- 1 x User Manual
- 2 x Mounting Ears with 4 Screws
- 1 x IR Emitter
- 1 x Power Adapter (DC 24V 1.25A)

Panel Description



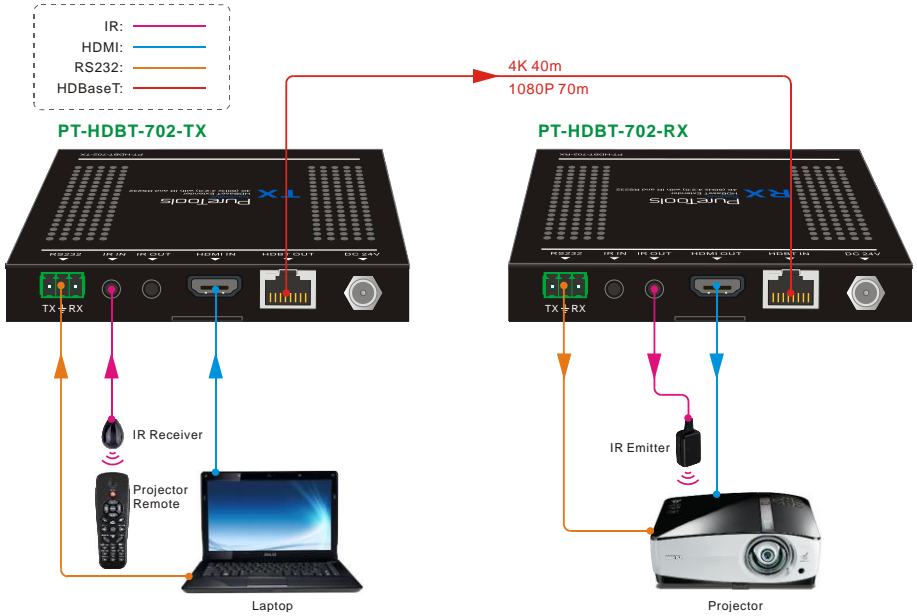
No.	Name	Description
①	LINK	HDBT Link status indicator: <ul style="list-style-type: none">▪ OFF: No Link▪ GREEN: Link Successful▪ Blinking GREEN: Link abnormal
②	HDCP	HDCP compliant indicator <ul style="list-style-type: none">▪ OFF: No HDMI traffic (no picture)▪ GREEN: Traffic with HDCP.▪ Blinking GREEN: Traffic without HDCP
③	Power	OFF: No power; RED: DC power present.
④	RS232	RS232 connector.
⑤	IR IN	Connect with 5V IR receiver (with carrier) to collect infrared signal, work with far-end IR OUT port
⑥	IR OUT	Connect with 5V IR emitter to send infrared signal, work with far-end IR IN port
⑦	HDMI IN	Connect with HDMI source
⑧	HDBT OUT	Connect to the HDBT IN socket on the Receiver via CAT5e/ CAT6a cable, support bi-directional PoH function.
⑨	DC 24V	Connect with power supply (Not necessary if receiver connects with power adaptor).

Note: Pictures shown in this manual are only for reference.

Specification

Input & Output	
Input	HDMI, IR & RS232
Input Connector	HDMI female, 3.5mm mini jack, 3p captive screw connector
Output	HDBT, IR, RS232
Output Connector	RJ-45, 3.5mm mini jack, 3p captive screw connector
General	
Resolution Range	640x480@60Hz~4K×2K@30Hz
Transmission Mode	HDBaseT
Transmission Distance	1080p ≤ 70m; 4Kx2K ≤ 40m
Bandwidth	10.2Gbps
HDMI Standard	Support HDMI1.4 and HDCP2.2
Temperature	0~ 50℃
Humidity	10% ~ 90%
Power Supply	Input: 100VAC~240VAC, 50/60Hz; Output: DC 24V, 1.25A
Power Consumption	14W
Dimension (W*H*D)	115mmx16.2mm x109mm
Net Weight	193g

System Diagram



After-Sales Service

If there appear some problems when running the product, please check and deal with the problems referring to this user manual. Any transport costs are borne by the users during the warranty.

1) Product Limited Warranty: This product will be free from defects in materials and workmanship for **two years** (The purchase invoice shall prevail).

Proof of purchase in the form of a bill of sale or receipted invoice which is evidence that the unit is within the Warranty period must be presented to obtain warranty service.

2) What the warranty does not cover (servicing available for a fee):

- Warranty expiration.
- Factory applied serial number has been altered or removed from the product.
- Damage, deterioration or malfunction caused by:
 - Normal wear and tear.
 - Use of supplies or parts not meeting our specifications.
 - No certificate or invoice as the proof of warranty.
 - The product model showed on the warranty card does not match with the model of the product for repairing or had been altered.
 - Damage caused by force majeure.
 - Servicing not authorized by distributor.
 - Any other causes which does not relate to a product defect.
- Delivery, installation or labor charges for installation or setup of the product.

3) Technical Support: For any questions or problems, contact your distributor or reseller and tell them the respective product name and version, the detailed failure situation as well as the formation of the cases.

Asking for Assistance

Technical Support:

Phone: +49 5971 800299 - 0

Fax: +49 5971 800299 – 99

Technical Support Hours:

8:30 AM to 5:00 PM Monday thru Thursday

8:30 AM to 4:00 PM Friday

Write to:

PureLink GmbH

Von-Liebig-Straße 10

D - 48432 Rheine

www.purelink.de

info@purelink.de
